

Mobiletron Electronics Co., Ltd.

Online Joint Investor Conference for Mobiletron Electronics and RAC Electric Vehicles

2023/11/29



Disclaimer

Except for historical information contained herein, the matters set forth in this presentation are forward looking statements that are subject to risks and uncertainties that could cause actual results to differ materially. These forward looking statements are not based on historical facts but rather on management's expectations regarding future growth, results of operations, performance, future capital and other expenditures, competitive advantages, business prospects and opportunities. Statements in this presentation about our future plans and intentions, results, level of activities, performance, goals or achievements or other future events constitute forward looking statements. Wherever possible, words such as "anticipate", "believe", "expect", "may", "could", "will", "potential", "intend", "estimate", "should", "plan", "predict", or the negative or other variations of statements reflect management's current beliefs and assumptions and are based on the information currently available to our management.

Investors are cautioned not to place undue reliance on these forward looking statements, which are made as of the date of this presentation, and we assume no obligation to update or revise any forward looking statements.



Business Performance

Presented by: Will Chan



- ◆ Founded : July, 1982
- ◆ Employees : 2,000
- ◆ Listed in Taiwan Stock Exchange : 2001
- ◆ Market : Export to more than 100 countries
- ◆ Major Products :
 - Electric Bus
 - Automotive Electronics
 - Industrial & Automotive lithium battery tools



Mobiletron Group - Milestone and Globalization



2009 Durofix California USA



2000 Mobiletron U.K



1982 Mobiletron Taiwan



2005 RAC(TW) RD Center



2022 Taichung Factory



2004 MAXWIN(TW)



2022 Blade Hydrogen Green
(Major investors)



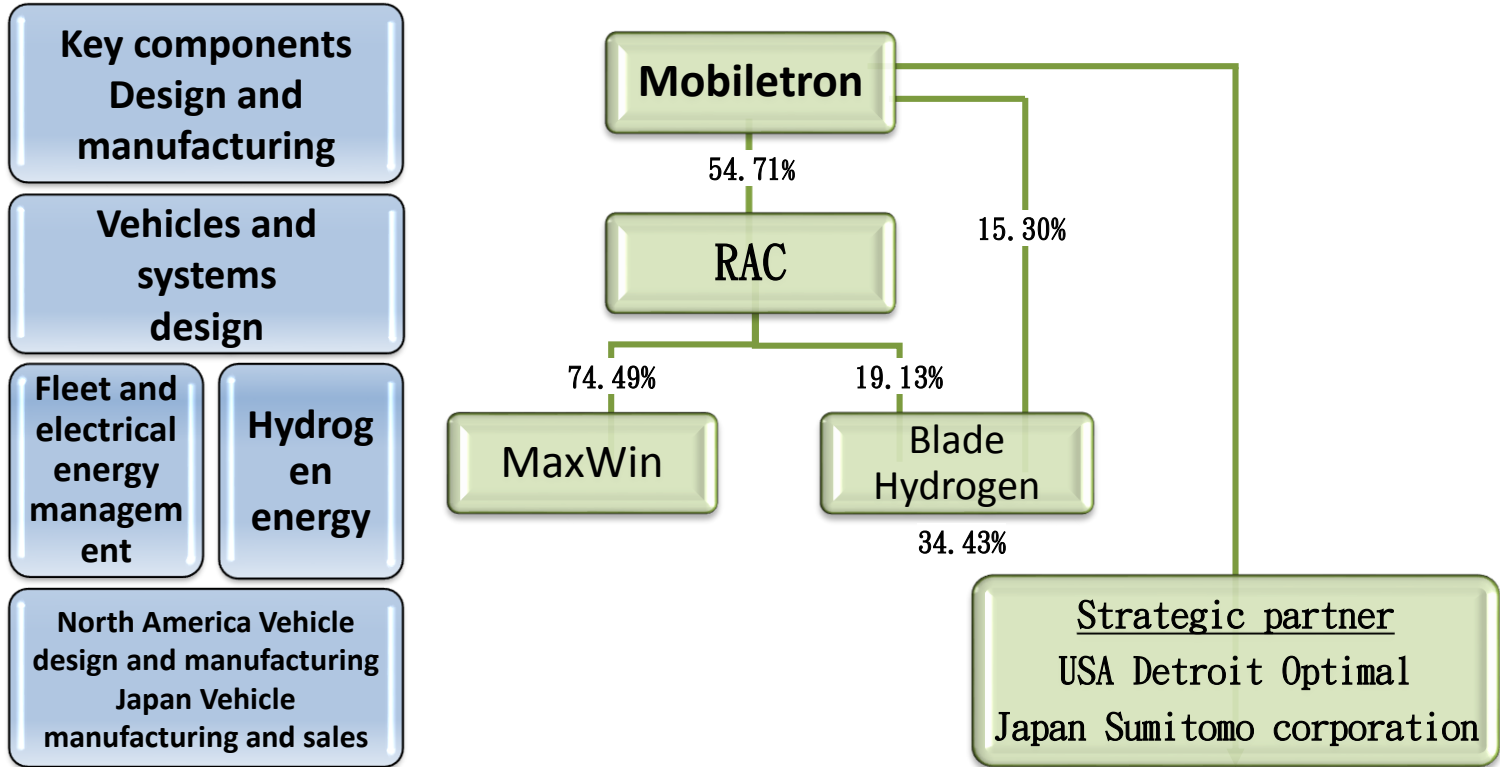
1995 Mobiletron China



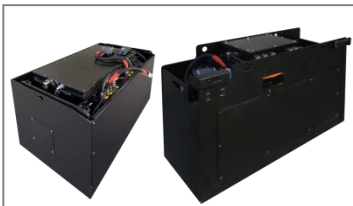
1988 Regitar Alabama USA



Electric Vehicle Investment Correlation Chart-build A Complete Electric Vehicle Ecosystem



Independent Design And Manufacturing Services For Key Components

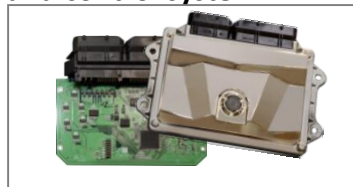


Electric stacker lithium battery box

Active Module Balancing
Battery Management System
Cell Monitoring Unit



Lithium battery balancing and control system



Vehicle control unit (VCU)



CTP Battery Pack



High Voltage Harness and Plug



TPMS



High/ Low Voltage PDU



Remote I/O



Gateway



OCPP 120 kW Chargers (GB/CCS1/CHAdeMO)



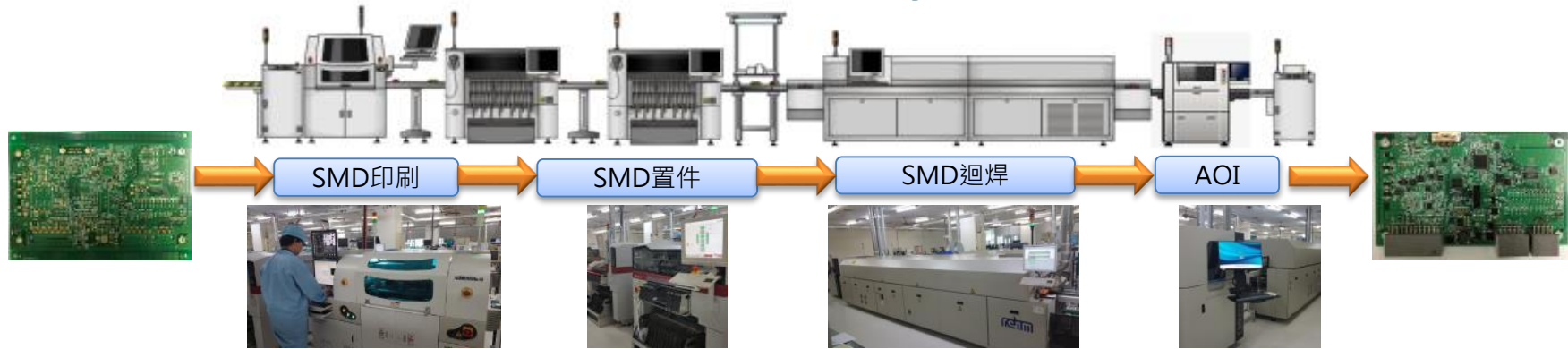
**DC Brushless Motor
Integrated with Controller**



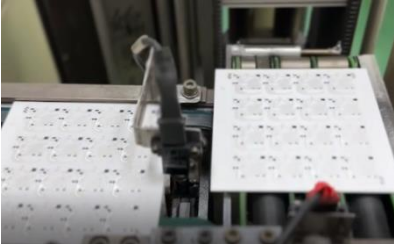
Industry 4.0 Assemble Tools 、 Rail and New Energy Industry Tools 、 High-efficiency Battery Platform and Tools



PCBA Assembly Line



HIC printing



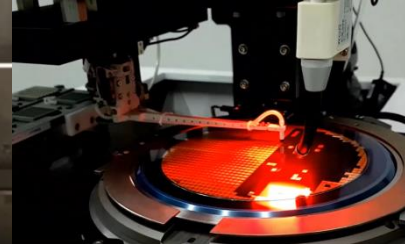
High speed laser trimming



High speed chip mounting



Bare die pick & place



Wire Bonding



Cell to Pack Battery Assembly (Cell to Pack)



CTP Battery Pack



Automation In-Line Process



Leaser Cleaning / welding



Testing



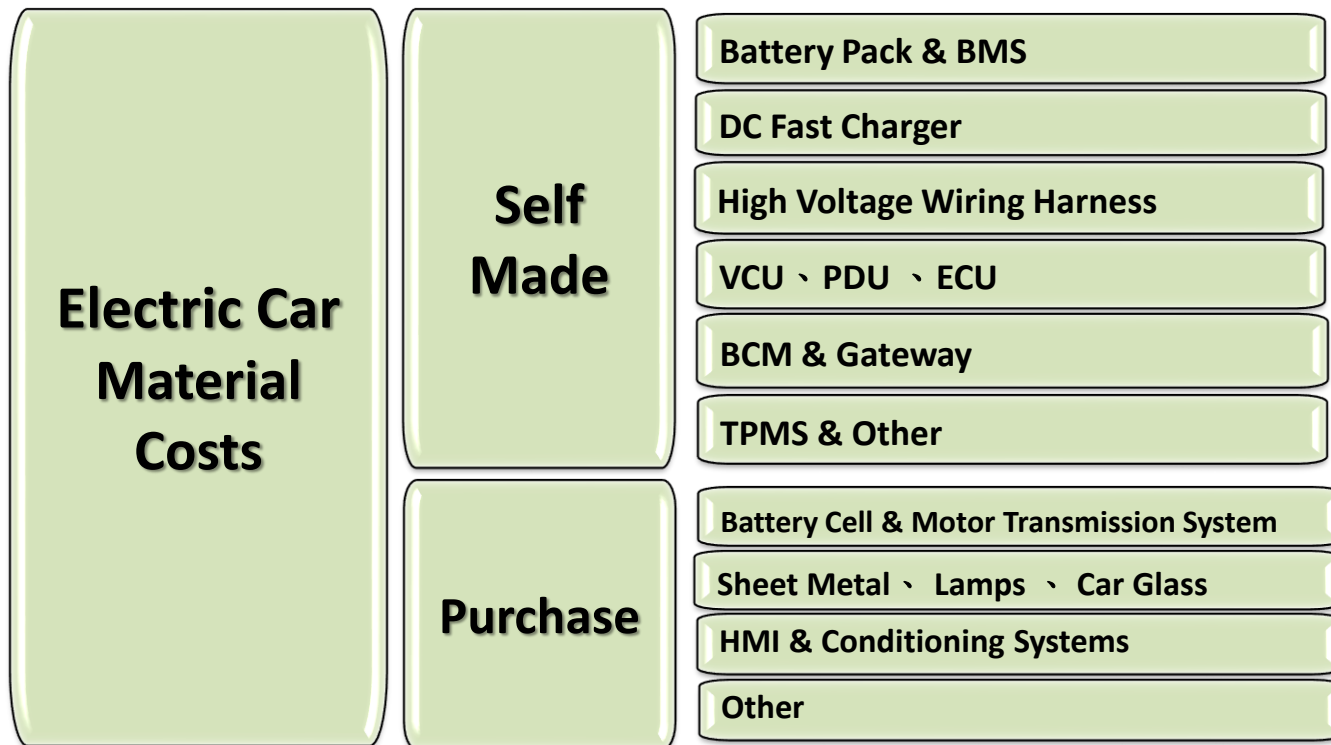
visual inspections



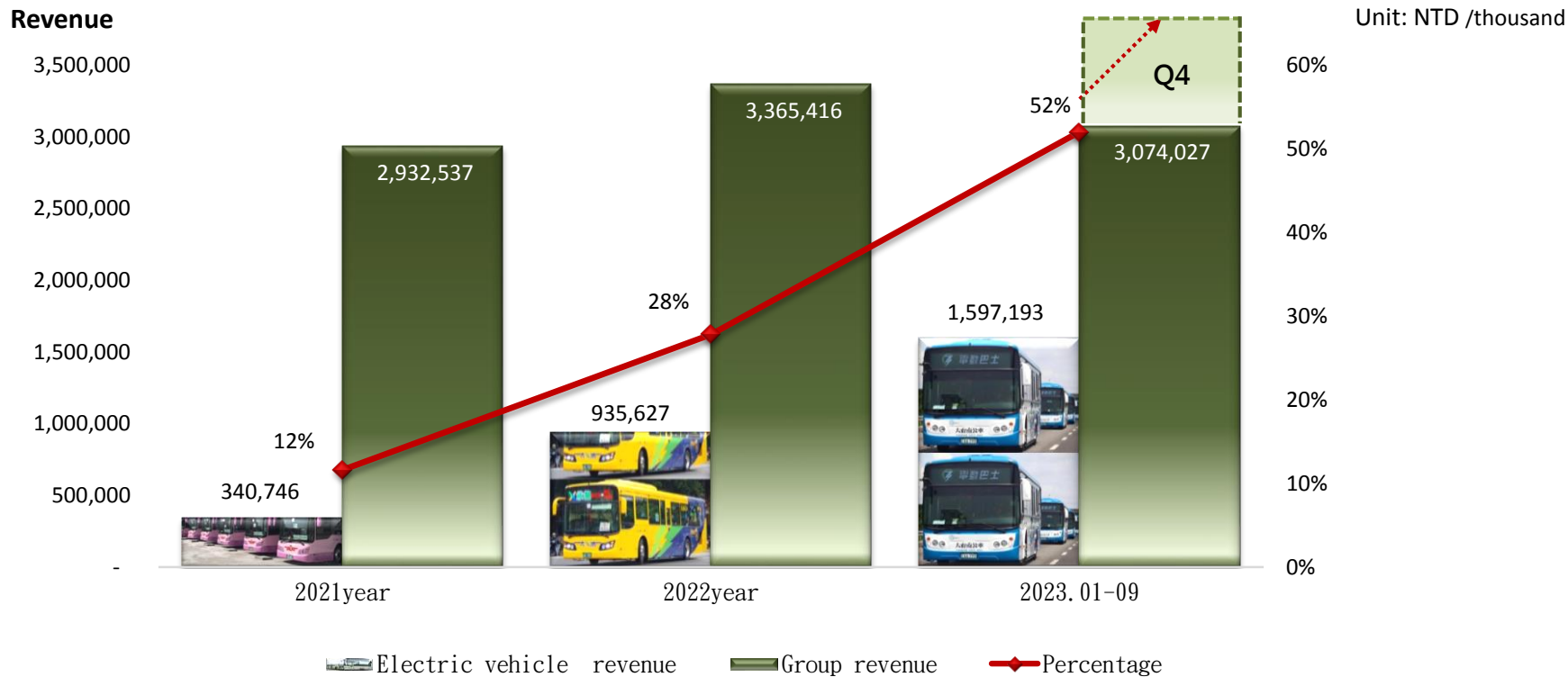
Charge and discharge test



Master Key Technologies To Reduce Production Costs



Electric vehicle revenue vs. Group revenue & Percentage



Income Statement (Consolidated)

Unit: NTD 1,000

	2020		2021		2022		2023. 1-9	
	The Group		The Group		The Group		The Group	
	\$	%	\$	%	\$	%	\$	%
Operating Revenue	2,866,192	100.0	2,932,537	100.0	3,365,416	100.0	3,074,027	100.0
Gross Profit	803,978	28.1	877,190	29.9	876,139	26.0	543,983	17.7
Operating expenses	739,976	25.8	848,095	28.9	967,996	28.8	738,111	24.0
Operating Income	64,002	2.2	29,095	1.0	(91,857)	(2.7)	(194,128)	(6.3)
Non-operating Income & Expenses	(3,860)	(0.1)	8,651	0.3	50,523	1.5	37,133	1.2
Pre-Tax Income	60,142	2.1	37,746	1.3	(41,334)	(1.2)	(156,995)	(5.1)
Net Income	(5,000)	(0.2)	12,876	0.4	(66,343)	(2.0)	(163,462)	(5.3)
Net profit of the current period belongs to Headquarters	85,187		86,629		39,170		(85,287)	
Capital	985,474		985,474		985,474		985,474	
Earnings per Share	0.86元		0.88元		0.40元		(0.87)元	

Thank you !

